

DATA SHEET

DIN Rail DALI Master Controller

Item number

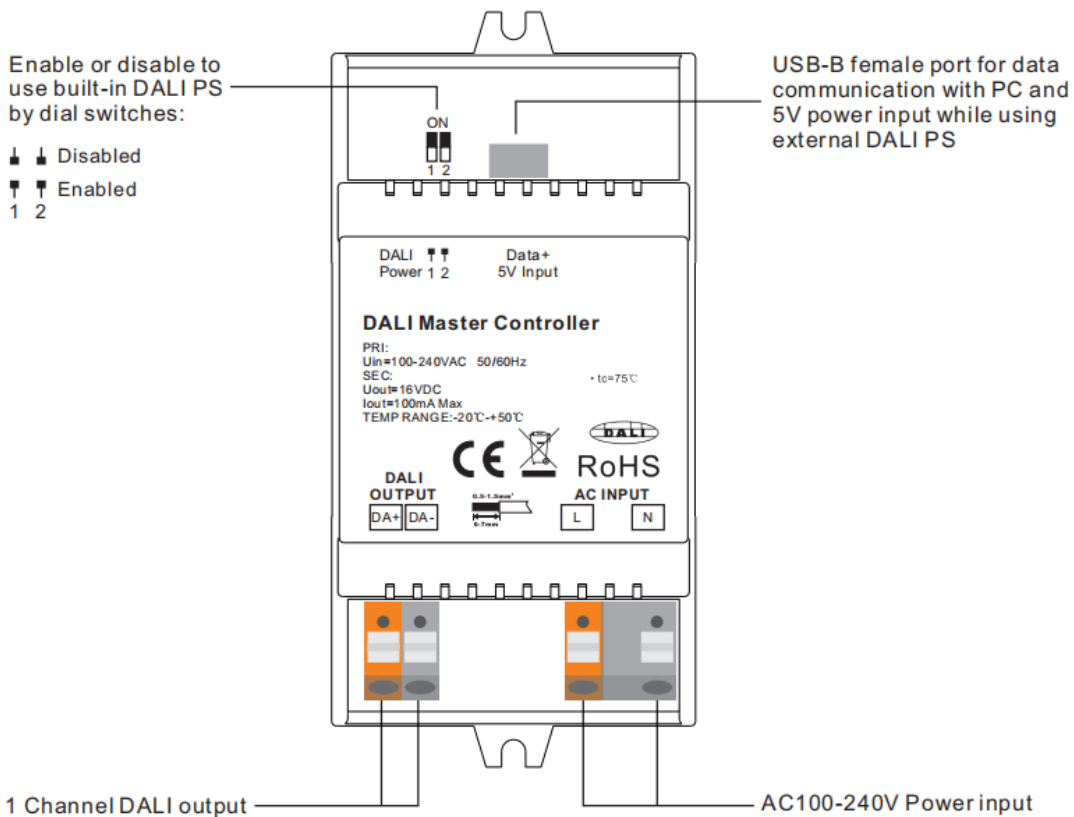
CT-DL-1023



- Supports DT6, DT8 Tc, DT8 XY, DT8 RGBWA control gear device types, DALI-2 input devices
- Supports addressing, grouping and scene configuration for max 64 control gears
- Built-in 100mA DALI PS, no extra wiring required
- Easy connect to a Windows PC through USB port
- Easy & quick configuration through the PC configuration software
- Built-in battery, built-in RTC, supports timer task configuration
- Supports cycle schedule configuration
- Supports bionic schedule configuration (Human Centric Lighting)
- Waterproof grade: IP20



Function Introduction



Safety & Warnings

- DO NOT install with power applied to device.
- DO NOT expose the device to moisture.

DATA SHEET**DIN Rail DALI Master Controller****Item number**

CT-DL-1023

Technical data**GENERAL****While built-in DALI PS enabled**

| | |
|------------------------|---------------|
| Input Voltage | 100-240VAC |
| Frequency | 50/60Hz |
| Number of DALI Channel | 1 |
| Output Voltage | 16VDC |
| Output Current | 100mA max |
| Size(LxWxH) | 110x53x65mm |
| Ambient Temperature | -20°C ~ +50°C |

While built-in DALI PS enabled

| | |
|--------------------------|---------------|
| Input Voltage | 5VDC |
| Number of DALI Channel | 1 |
| DALI Current Consumption | 4mA max |
| Size(LxWxH) | 110x53x65mm |
| Ambient Temperature | -20°C ~ +50°C |

DATA SHEET

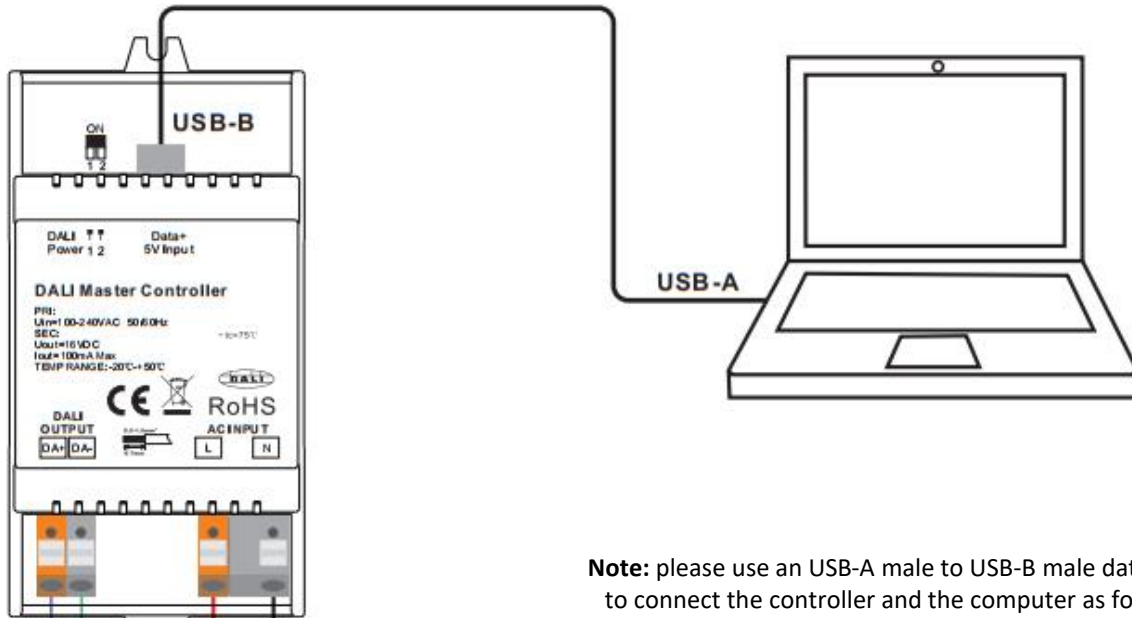
DIN Rail DALI Master Controller

Item number

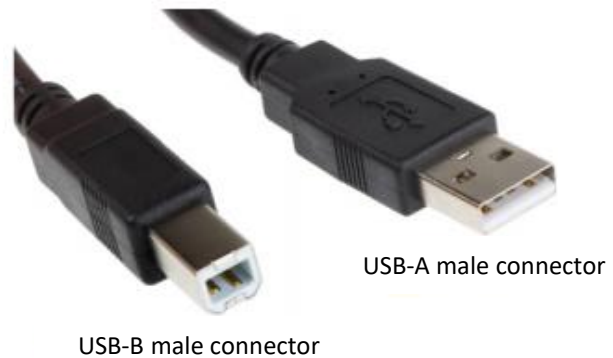
CT-DL-1023

Wiring Diagram

(1) While built-in DALI PS enabled



Note: please use an USB-A male to USB-B male data cable to connect the controller and the computer as follows:



Note: When built-in DALI Bus PS is enabled, the controller can supports up to total 50 devices including control gears & input devices.

DATA SHEET

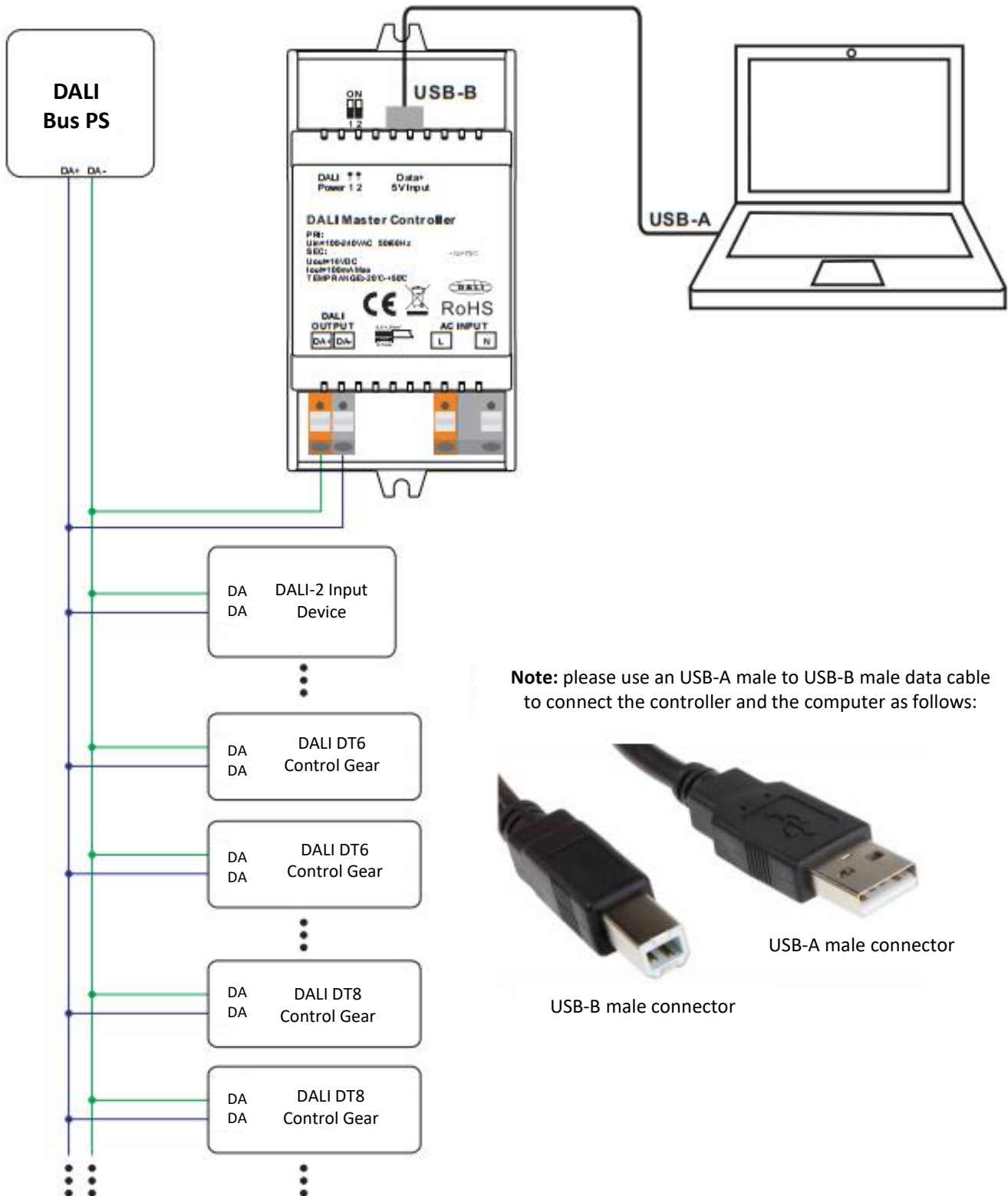
DIN Rail DALI Master Controller

Item number

CT-DL-1023

Wiring Diagram

(2) While built-in DALI PS disabled



Note: When built-in DALI Bus PS is disabled, the controller can supports up to total 64 control gears and 32 input devices depending on external DALI PS.

DATA SHEET

DIN Rail DALI Master Controller

Item number

CT-DL-1023

Operation

- 1) Do wiring according to the wiring diagram and power on the DALI system.
- 2) Install the "DALI Master" software on the operating computer:

Step 1: Run the installation file and select installation mode as shown in **Figure 1**.

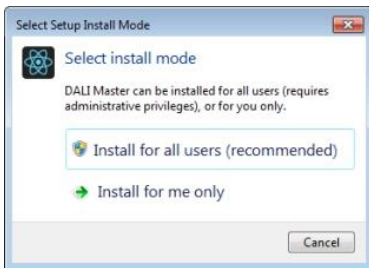


Figure 1 Select Installation Mode

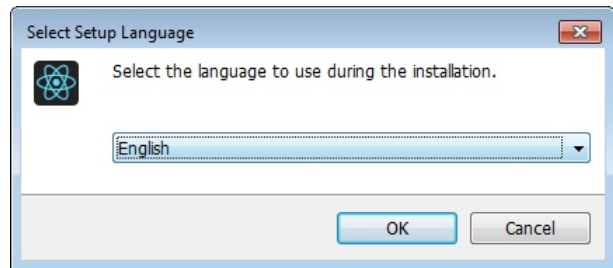


Figure 2 Select a Installation Language

Step 2: Select installation language as shown in Figure 2.

Step 3: Select installation path as shown in Figure 3.

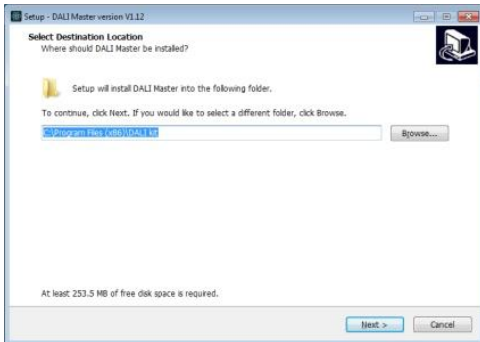


Figure 3 Installation Path

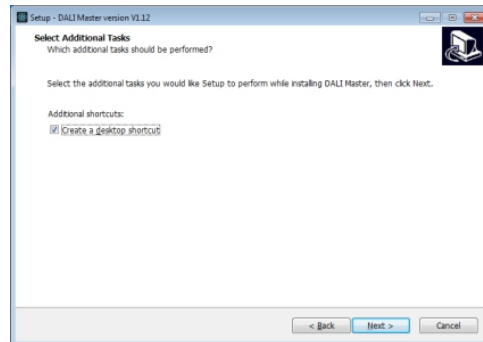


Figure 4 Create Desktop Shortcut

Step 4: Create desktop shortcut as shown in Figure 4.

Step 5: Starting installation as shown in Figure 5.

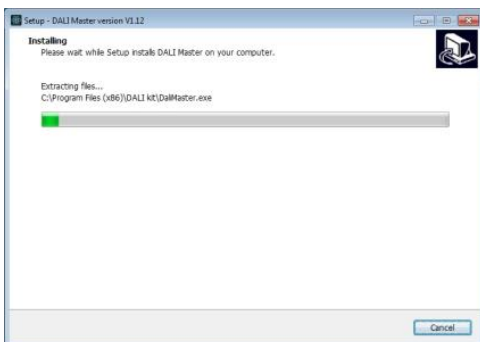


Figure 5 Starting Installation



Figure 6 Complete Installation

DATA SHEET

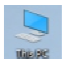
DIN Rail DALI Master Controller

Item number

CT-DL-1023

Step 6: Complete installation as shown in **Figure 6**.

3) JRE Environment Variables Configuration

Step 1: right click the computer icon  on the desktop, select “Properties”, then “Advanced system settings” to open the system properties setting window as shown in **Figure 7**:

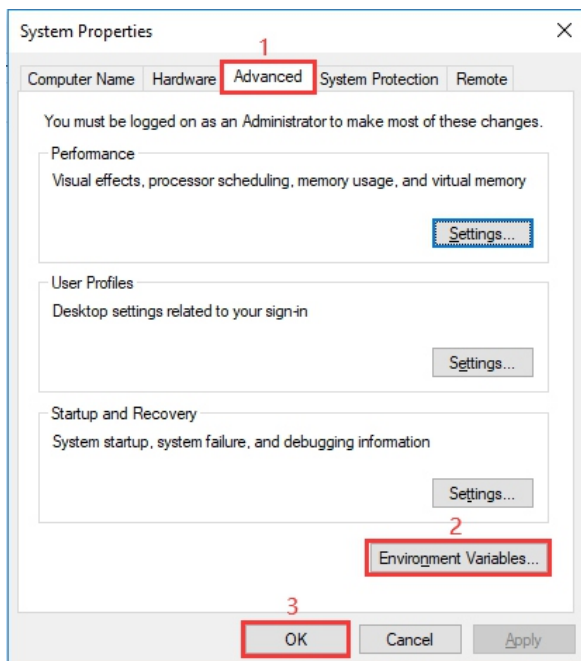


Figure 7 System Properties Window

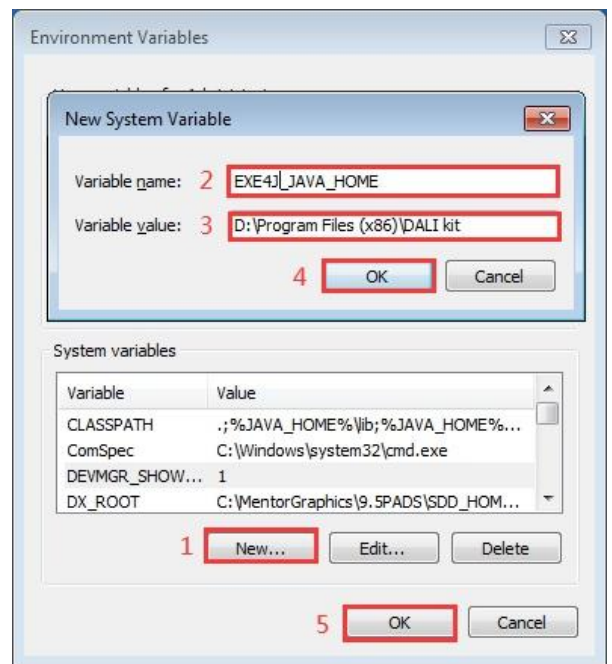


Figure 8 Environment Variables Setting Window

Step 2: switch to “Advanced” tab, then click button “Environment Variables” to open the environment variables setting window as shown in **Figure 8**:

Step 3: Click “New” button, the parameter setting window will pop-up, Variable name must be set as “EXE4J_JAVA_HOME”, Variable value should be set as the installation path of the software (the parameter in **Figure 8** is just for your reference), then click “OK” one by one to go back to the window in **Figure 7**, then click “OK” to save the environment variables setting.

Step 4: Re-start the computer to apply the environment variables configuration.

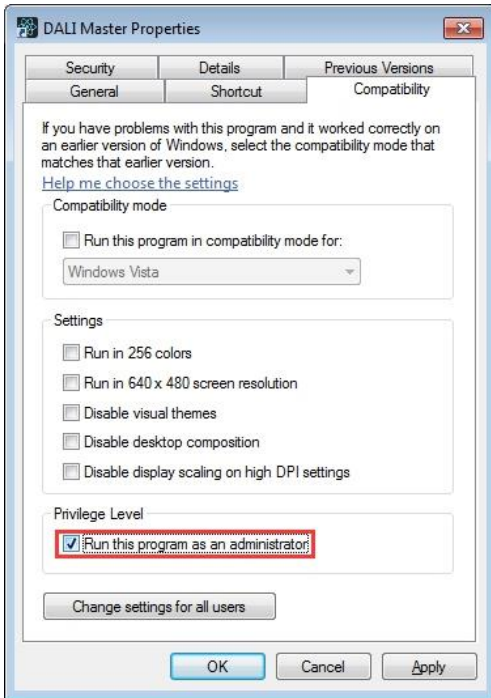
DATA SHEET

DIN Rail DALI Master Controller

Item number


CT-DL-1023

Notes:



1) Please install the software according the installation steps, otherwise it can not be started correctly.

2) This software is installed to disk C by default, if the installation path is not modified, please run the software as administrator, detailed method is as follows:

Step 1: Right click the desktop icon  check the properties, switch to "Compatibility" tab, and check item "Run this program as an administrator" as shown in **Figure 9**.

Step 2: Click "OK" to complete the setting as shown in **Figure 9**.

3) If you need to re-install the software, if you need to change the installation path please first uninstall previous installation, otherwise just install to cover the previous installation.

Figure 9. Run this program as an administrator

4) INSTALL CH340 DRIVER

Step 1: Connect the USB communication port wire, double click the file "CH341SER.EXE" to install, as shown in **Figure 10**.

| 名称 | 修改日期 | 类型 | 大小 |
|--------------|------------------|------|--------|
| CH341SER.EXE | 2019/10/23 10:46 | 应用程序 | 277 KB |
| Readme.txt | 2020/1/9 16:58 | 文本文档 | 1 KB |

Figure 10. Double Click "CH341SER.EXE"

Step 2: If there is an indication that installation failed, please first uninstall the installation, then install again.

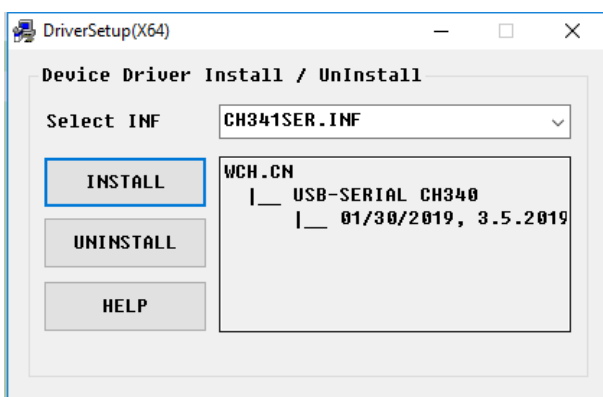


Figure 11 Driver Installation

DATA SHEET

DIN Rail DALI Master Controller

Item number

CT-DL-1023

Step 3: Right click “This PC”, then click “Management”, then click “Device Manager”, then you can check whether the installation is successful or not as shown in **Figure 12**.

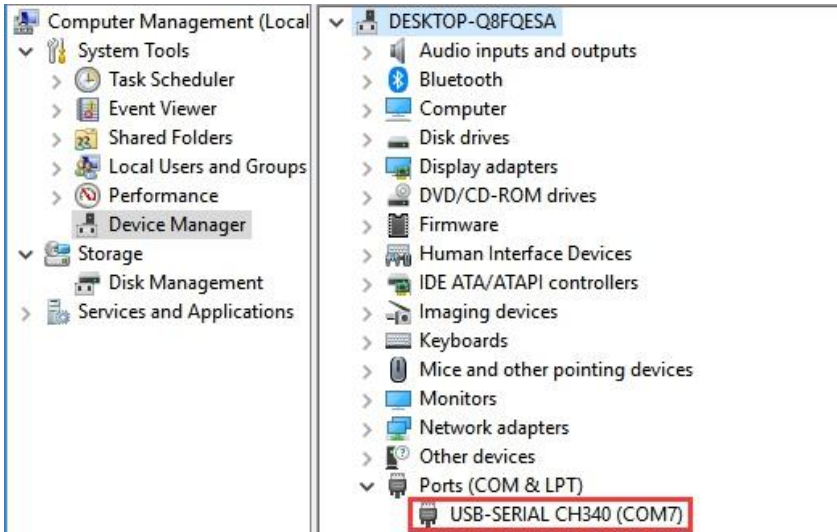


Figure 12 Driver Installation Successful

5) Follow the instruction of the PC configuration software to configure the master controller and control gears, for detailed operation please refer to the user manual of the PC software.

Product Dimension

